

## ❁ RIDDLES

A riddle is a genre of oral literature that represents social and psychological phenomena of the human imagination and that is solved through puzzling questions.

*Brass that does not exist here,  
Brass that has no owner,  
Brass that is a span in size,  
Brass that is round. What is this? (the sun)*

This riddle describes solar illumination and demands knowledge of measurements, like the span. A riddle is a test of intelligence and thinking capacity.

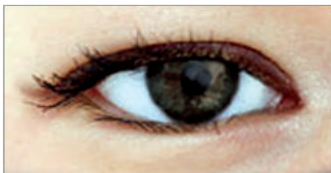
Let's take some examples:



• It is possible to unfurl and furl this like cervical vertebrae. What is this? (*Lattice wall of ger*)



• The upper part is exactly yellow,  
The middle part is swan white,  
The lower part is rather grey. What is this?  
(*Clotted cream, milk and sediment of boiled milk*)



• If you clench it,  
It cannot fill your palm;  
If you unclench it,  
It can fill out a vast plain. What is this?  
(*Eyes*)



• They have the characteristics  
of yearling colts. What is this?  
(*Ankle or knuckle bones*)



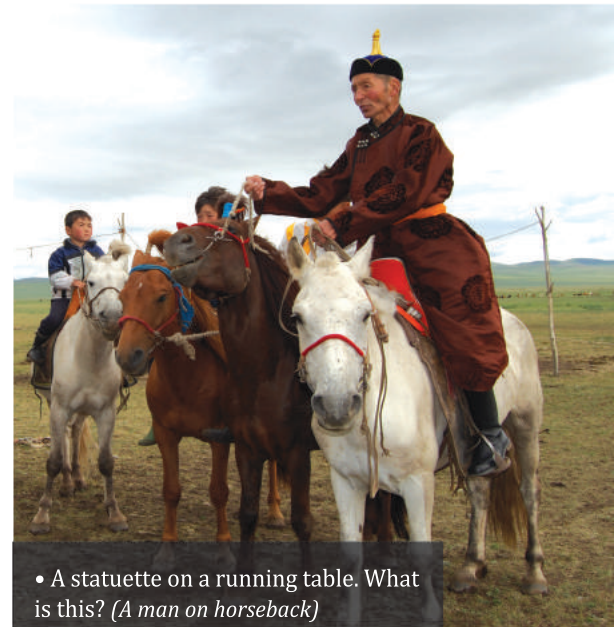
• It is smaller than you, but it can lift you. What is this? (*Stirrup*)



• It is near if you see, it is far if you bite. What is this? (*The palm of hand*)



• Sandal cups vie with each other on the road. What is this? (*Hoofs*)



• A statuette on a running table. What is this? (*A man on horseback*)



• An animal that has a pig tail on its back and has a big voice. What is this?  
(*Dog*)



• The trunk is full of curly-budges. What is this? (*Teeth*)



• This is a silver cup on the ice. What is that? (*The moon*)